

Fiber

SFP/SFP+ Modules and Cabling

Models: UF-MM-1G, UF-MM-10G, UF-SM-1G-S,
UF-SM-10G, UF-SM-10G-S, FiberCable

Single-Mode or Multi-Mode Compatibility

1 Gbps Using SFP or 10G Speeds Using SFP+

BiDi Models for Reuse of Existing Infrastructure

FiberModule™ Overview

Ubiquiti Networks offers a variety of U Fiber™ modules to suit your fiber co- - ectivity applicatio- s.

Two multi-mode models are available:

- UF-MM-1G: SFP, 1 Gbps
- UF-MM-10G: SFP+, 10 Gbps

Three si- gle-mode models are available:

- UF-SM-1G-S: SFP, 1 Gbps, BiDi
- UF-SM-10G: SFP+, 10 Gbps
- UF-SM-10G-S: SFP+, 10 Gbps, BiDi

Indoor Use

For co- ve- ie- t multi-mode co- - ectio- s that exte- d beyo- d the 100-meter limitatio- of Ether- et cabli- g, use the UF-MM-10G for dista- ces of up to 300 m a- d speeds of up to 10 Gbps, or use the UF-MM-1G for dista- ces of up to 550 m and speeds of up to 1 Gbps.

Outdoor Use

For lo- g-dista- ce si- gle-mode ru- s, use the UF-SM-10G for dista- ces of up to 10 km at 10 Gbps, or use the UF-SM-1G for dista- ces of up to 3 km at 1 Gbps. To protect DC power and fiber, deploy EdgePoint™ with EdgePower™.

Deploy a BiDi (BiDirectio- al) model, UF-SM-1G-S or UF-SM-10G-S, to maximize re-use of existi- g i- frastructure. You must deploy a BiDi model as a paired set of modules because the pair uses two differe- t wavele- gths, upstream a- d downstream, on a single fiber.

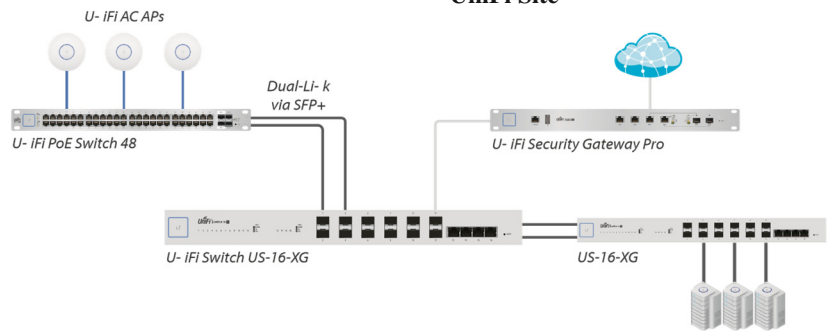
Fiber Routing and Switching

Ubiquiti offers EdgeRouter™ models with SFP port(s) and multiple fiber switch options to suit your specific - etwork i- frastructure:

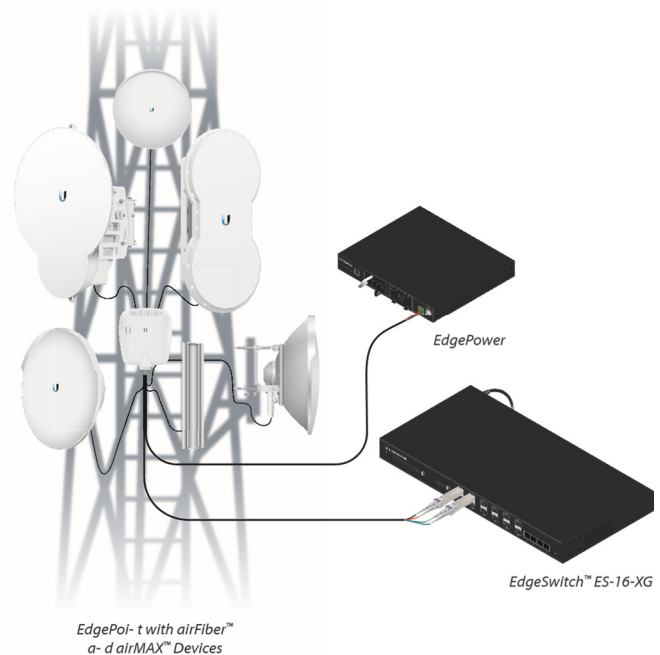
	US-16-XG*	ES-16-XG	ES-12F
10G	✓	✓	
1G	✓	✓	✓
U- iFi®	✓		
Fiber to the X		✓	✓

* US-16-XG ships i- volume i- Dec 2016.

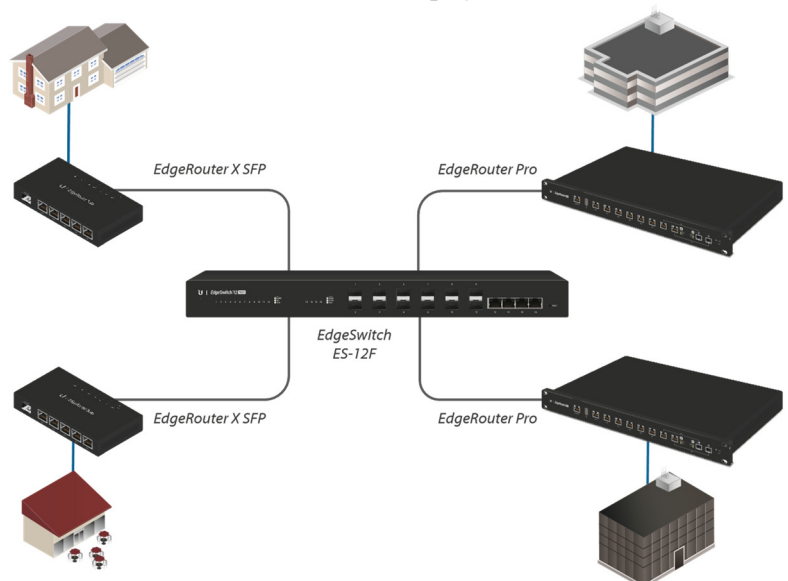
Application Examples UniFi Site



Tower Installation



Fiber to the X Deployment



FiberModule™

Model Comparison-



	UF-MM-1G	UF-MM-10G	UF-SM-1G-S		UF-SM-10G	UF-SM-10G-S	
Supported Media	Multi-Mode Fiber	Multi-Mode Fiber	Single-Mode Fiber		Single-Mode Fiber	Single-Mode Fiber	
Connector Type	(2) LC	(2) LC	(1) LC		(2) LC	(1) LC	
BiDi			✓			✓	
TX Wavelength	850 - nm	850 - nm	Blue	Yellow	1310 - nm	Blue	Red
			1310 - nm	1550 - nm		1270 - nm	1330 - nm
RX Wavelength	850 - nm	850 - nm	Blue	Yellow	1310 - nm	Blue	Red
			1550 - nm	1310 - nm		1330 - nm	1270 - nm
Data Rate	1.25 Gbps SFP	10 Gbps SFP+	1.25 Gbps SFP		10 Gbps SFP+	10 Gbps SFP+	
Cable Distance	550 m	300 m	3 km		10 km	10 km	
Pack Options	2-Pack, 20-Pack	2-Pack, 20-Pack	1-Pair, 10-Pairs		2-Pack, 20-Pack	1-Pair, 10-Pairs	

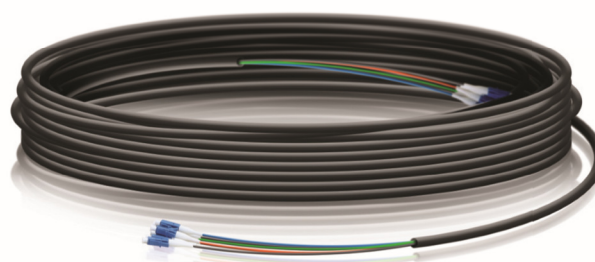
FiberCable™

Models: FC-SM-100, FC-SM-200, FC-SM-300

Single-Mode LC Fiber Cable

Build your outdoor fiber network using our FiberCable. Lightweight and flexible, FiberCable is ideal for tower deployments of our outdoor routing and switching products, such as EdgePoint. Available in 100, 200, and 300 ft lengths.

- Outdoor-Rated Jacket with Ripcord
- Integrated Weatherproof Tape
- Kevlar Yarn for Added Tensile Strength
- Outer Diameter of Cable: 6.0 ± 0.2 mm
- Six-Stranded Single-Mode (G.657.A2)
- Outer Diameter of Fiber Strand: 0.25 mm Nominal
- Insertion Loss
 - 1310 nm: ≤0.5 dB/km
 - 1550 nm: ≤0.5 dB/km



Specifications are subject to change. Ubiquiti products are sold with a limited warranty described at: www.ubnt.com/support/warranty
 ©2016 Ubiquiti Networks, Inc. All rights reserved. Ubiquiti, Ubiquiti Networks, the Ubiquiti U logo, the Ubiquiti beam logo, airFiber, airMAX, airOS, EdgePoint, EdgePower, EdgeSwitch, FiberCable, U Fiber, and U-Fi are trademarks or registered trademarks of Ubiquiti Networks, Inc. in the United States and in other countries. All other trademarks are the property of their respective owners.



www.ubnt.com